

FUI **FITTINGS** **UNLIMITED** INC

Adapter & Fitting Specialist

www.myfui.com

Standard Parts List

CORPORATE SALES

DALLAS, TX

3000 AVENUE F

ARLINGTON, TX 76011

(800) 348-8467 (281) 500-9570 FAX

CLEVELAND, OH

(800) 348-8467 (817) 860-8517 FAX

HOUSTON, TX

(800) 633-5340 (281) 500-9570 FAX

SALT LAKE CITY, UT

(800) 348-8467 (817) 860-8517 FAX

CANADA -AURORA, ONTARIO

(877) 644-4403 (905) 713-3927 FAX

ATLANTA, GA

(800) 348-8467 (817) 860-8517 FAX

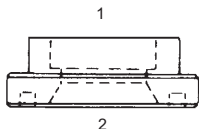
- TERMS -** All invoices are 2%-10 Net 30 with approved credit. A 1½% finance charge will be assessed on all past due accounts. All accounts due and payable in Arlington, Tarrant County, Texas.
- MINIMUM ORDER -** \$25.00 per order
- POR -** Price On Request
- RETURNS -** Fittings may be returned only with authorization from FITTINGS UNLIMITED, INC. - subject to our inspection and must be shipped freight prepaid within 30 days of original shipment. A restocking fee of 20% or \$10.00, whichever is greater, will apply. In case of shipping errors, notification must be made within 30 days to receive an adjustment. Special fittings and made to order items are non-cancelable and not returnable without written consent of FITTINGS UNLIMITED, INC.

*Import Flange
Adapters*

*“It is the policy of Fittings Unlimited, Inc.
to maintain and improve our customer satisfaction by
providing hydraulic and pneumatic fittings and
accessories that consistently meet our customer’s
specified product and delivery requirements.”*

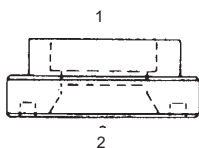
IMPORT FLANGE FITTINGS

Styles may vary from picture



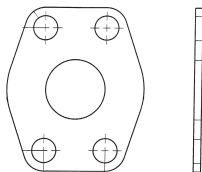
Y-SF-3300-61
(1) (2) Braze Flange
Code 61

- Y-SF-3300-61-08-08
- Y-SF-3300-61-12-12
- Y-SF-3300-61-16-12
- Y-SF-3300-61-16-16
- Y-SF-3300-61-20-16
- Y-SF-3300-61-20-20
- Y-SF-3300-61-24-20
- Y-SF-3300-61-24-24
- Y-SF-3300-61-32-32
- Y-SF-3300-61-40-40
- Y-SF-3300-61-48-48



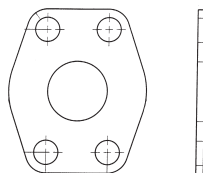
Y-SF-3300-62
(1) (2) Braze Flange
Code 62

- Y-SF-3300-62-08-08
- Y-SF-3300-62-12-12
- Y-SF-3300-62-16-12
- Y-SF-3300-62-16-16
- Y-SF-3300-62-20-20
- Y-SF-3300-62-24-24
- Y-SF-3300-62-32-32



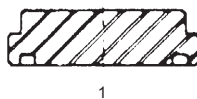
Y-SF-61-CP
Connector Plate
Code 61

- Y-SF-61-CP-08
- Y-SF-61-CP-12
- Y-SF-61-CP-16
- Y-SF-61-CP-20
- Y-SF-61-CP-24
- Y-SF-61-CP-32
- Y-SF-61-CP-40
- Y-SF-61-CP-48



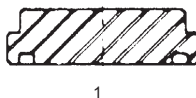
Y-SF-62-CP
Connector Plate
Code 62

- Y-SF-62-CP-08
- Y-SF-62-CP-12
- Y-SF-62-CP-16
- Y-SF-62-CP-20
- Y-SF-62-CP-24
- Y-SF-62-CP-32



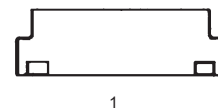
Y-SF-P61
(1) Flange Plug

- Y-SF-P61-08
- Y-SF-P61-12
- Y-SF-P61-16
- Y-SF-P61-20
- Y-SF-P61-24
- Y-SF-P61-32
- Y-SF-P61-40
- Y-SF-P61-48
- Y-SF-P61-64



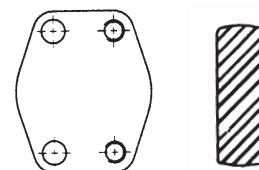
Y-SF-P62
(1) Flange Plug

- Y-SF-P62-08
- Y-SF-P62-12
- Y-SF-P62-16
- Y-SF-P62-20
- Y-SF-P62-24
- Y-SF-P62-32



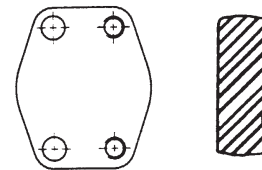
Y-SF-PCAT
(1) Caterpillar Flange Plug

- Y-SF-PCAT-12
- Y-SF-PCAT-16
- Y-SF-PCAT-20
- Y-SF-PCAT-24
- Y-SF-PCAT-32



Y-SF-W36K
Blanking Flange - with O-ring Groove
Drilled Holes - O-Ring Kit
Code 61

- Y-SF-W36K-08-08
- Y-SF-W36K-12-12
- Y-SF-W36K-16-16
- Y-SF-W36K-20-20
- Y-SF-W36K-24-24
- Y-SF-W36K-32-32
- Y-SF-W36K-40-40
- Y-SF-W36K-48-48

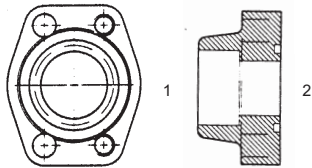


Y-SF-W38K
Blanking Flange - with O-ring Groove
Drilled Holes - O-Ring Kit
Code 62

- Y-SF-W38K-08-08
- Y-SF-W38K-12-12
- Y-SF-W38K-16-16
- Y-SF-W38K-20-20
- Y-SF-W38K-24-24
- Y-SF-W38K-32-32

IMPORT FLANGE FITTINGS

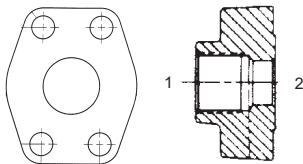
Styles may vary from picture



Y-SF-W43K

- (1) Fem. Pipe
- (2) Flange - with O-ring Groove
Drilled Holes - O-Ring Kit
Code 61

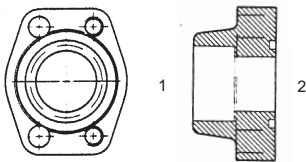
- Y-SF-W43K-08-08
- Y-SF-W43K-12-12
- Y-SF-W43K-16-16
- Y-SF-W43K-20-20
- Y-SF-W43K-24-24
- Y-SF-W43K-32-32
- Y-SF-W43K-40-40
- Y-SF-W43K-48-48



Y-SF-W104

- (1) Fem. NPTF Thread
- (2) Flange - Tapped Holes
Companion to Y-SF-W43K
Code 61

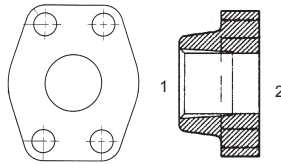
- Y-SF-W104-08-08
- Y-SF-W104-12-12
- Y-SF-W104-16-16
- Y-SF-W104-20-20
- Y-SF-W104-24-24
- Y-SF-W104-32-32



Y-SF-W44K

- (1) Fem. Pipe
- (2) Flange - with O-ring Groove
Drilled Holes - O-Ring Kit
Code 62

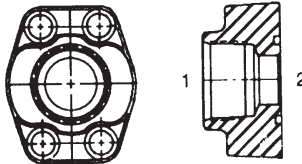
- Y-SF-W44K-08-08
- Y-SF-W44K-12-12
- Y-SF-W44K-16-16
- Y-SF-W44K-20-20
- Y-SF-W44K-24-24
- Y-SF-W44K-32-32



Y-SF-W45

- (1) Fem. Pipe
- (2) Flange - Tapped Holes
Companion to Y-SF-W44K
Code 62

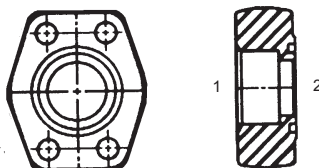
- Y-SF-W45-08-08
- Y-SF-W45-12-12
- Y-SF-W45-16-16
- Y-SF-W45-20-20
- Y-SF-W45-24-24
- Y-SF-W45-32-32



Y-SF-W46K

- (1) SAE Internal Straight Thread
- (2) Flange - with O-ring Groove
Drilled Holes - O-Ring Kit
Code 61

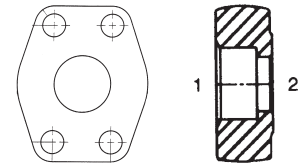
- Y-SF-W46K-08-08
- Y-SF-W46K-12-12
- Y-SF-W46K-16-16
- Y-SF-W46K-20-20
- Y-SF-W46K-24-24
- Y-SF-W46K-32-32



Y-SF-W4K

- (1) Flat Socket Weld Pipe
- (2) Flange - with O-ring Groove
Drilled Holes - O-Ring Kit
Code 61

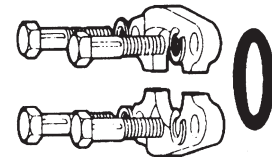
- Y-SF-W4K-08-08
- Y-SF-W4K-12-12
- Y-SF-W4K-16-16
- Y-SF-W4K-20-20
- Y-SF-W4K-24-24
- Y-SF-W4K-32-32
- Y-SF-W4K-40-40
- Y-SF-W4K-48-48



Y-SF-W61

- (1) Flat Socket Weld Pipe
- (2) Flange - Tapped Holes
Companion to Y-SF-W4K
Code 61

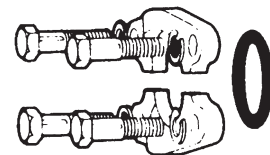
- Y-SF-W61-08-08
- Y-SF-W61-12-12
- Y-SF-W61-16-16
- Y-SF-W61-20-20
- Y-SF-W61-24-24
- Y-SF-W61-32-32
- Y-SF-W61-40-40
- Y-SF-W61-48-48



Y-SFK-61

Split Flange Kit
Code 61

- Y-SFK-61-08
- Y-SFK-61-12
- Y-SFK-61-16
- Y-SFK-61-20
- Y-SFK-61-24
- Y-SFK-61-32
- Y-SFK-61-40
- Y-SFK-61-48



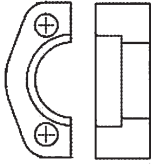
Y-SFK-62

Split Flange Kit
Code 62

- Y-SFK-62-08
- Y-SFK-62-12
- Y-SFK-62-16
- Y-SFK-62-20
- Y-SFK-62-24
- Y-SFK-62-32

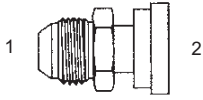
IMPORT FLANGE FITTINGS

Styles may vary from picture



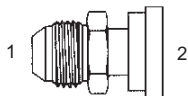
Y-SFK-62-CAT
Caterpillar Flange Kit
Comes with bolts and O-Ring
Code 62

- Y-SFK-62-CAT-12
- Y-SFK-62-CAT-16
- Y-SFK-62-CAT-20
- Y-SFK-62-CAT-24
- Y-SFK-62-CAT-32



Y-1700-61 - Str.
(1) Male 37°
(2) O-Ring Flange
Code 61

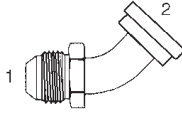
- Y-1700-61-08-08
- Y-1700-61-08-12
- Y-1700-61-10-10
- Y-1700-61-12-12
- Y-1700-61-12-16
- Y-1700-61-12-20
- Y-1700-61-12-24
- Y-1700-61-16-12
- Y-1700-61-16-16
- Y-1700-61-16-20
- Y-1700-61-16-24
- Y-1700-61-20-12
- Y-1700-61-20-16
- Y-1700-61-20-20
- Y-1700-61-20-24
- Y-1700-61-20-32
- Y-1700-61-24-20
- Y-1700-61-24-24
- Y-1700-61-24-32
- Y-1700-61-32-24
- Y-1700-61-32-32



Y-1700-62 - Str.
(1) Male 37°
(2) O-Ring Flange
Code 62

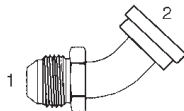
- Y-1700-62-08-08
- Y-1700-62-12-12
- Y-1700-62-12-16
- Y-1700-62-16-12

- Y-1700-62-16-16
- Y-1700-62-16-20
- Y-1700-62-16-24
- Y-1700-62-20-16
- Y-1700-62-20-20
- Y-1700-62-20-24
- Y-1700-62-24-20
- Y-1700-62-24-24
- Y-1700-62-24-32
- Y-1700-62-32-32



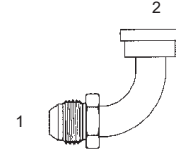
Y-1703-61 - 45°
(1) Male 37°
(2) O-Ring Flange
Code 61

- Y-1703-61-08-08
- Y-1703-61-08-12
- Y-1703-61-12-12
- Y-1703-61-12-16
- Y-1703-61-12-20
- Y-1703-61-16-12
- Y-1703-61-16-16
- Y-1703-61-16-20
- Y-1703-61-16-24
- Y-1703-61-20-12
- Y-1703-61-20-16
- Y-1703-61-20-20
- Y-1703-61-20-24
- Y-1703-61-24-20
- Y-1703-61-24-24
- Y-1703-61-24-32
- Y-1703-61-32-24
- Y-1703-61-32-32



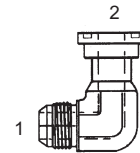
Y-1703-62 - 45°
(1) Male 37°
(2) O-Ring Flange
Code 62

- Y-1703-62-12-12
- Y-1703-62-12-16
- Y-1703-62-12-20
- Y-1703-62-16-12
- Y-1703-62-16-16
- Y-1703-62-16-20
- Y-1703-62-16-24
- Y-1703-62-20-12
- Y-1703-62-20-16
- Y-1703-62-20-20
- Y-1703-62-20-24
- Y-1703-62-24-20
- Y-1703-62-24-24
- Y-1703-62-32-32



Y-1704-61 - 90°
(1) Male 37°
(2) O-Ring Flange
Code 61

- Y-1704-61-08-08
- Y-1704-61-08-12
- Y-1704-61-12-12
- Y-1704-61-12-16
- Y-1704-61-12-20
- Y-1704-61-12-24
- Y-1704-61-16-12
- Y-1704-61-16-16
- Y-1704-61-16-20
- Y-1704-61-16-24
- Y-1704-61-20-12
- Y-1704-61-20-16
- Y-1704-61-20-20
- Y-1704-61-20-24
- Y-1704-61-20-32
- Y-1704-61-24-16
- Y-1704-61-24-20
- Y-1704-61-24-24
- Y-1704-61-24-32
- Y-1704-61-32-24
- Y-1704-61-32-32

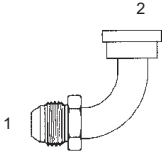


Y-1704-F-61 - 90°
Forged
(1) Male 37°
(2) O-Ring Flange
Code 61

- Y-1704-F-61-08-08
- Y-1704-F-61-12-12
- Y-1704-F-61-12-16
- Y-1704-F-61-16-12
- Y-1704-F-61-16-16
- Y-1704-F-61-16-20
- Y-1704-F-61-20-16
- Y-1704-F-61-20-20
- Y-1704-F-61-24-24
- Y-1704-F-61-24-32
- Y-1704-F-61-32-32

IMPORT FLANGE FITTINGS

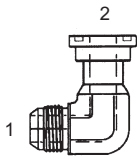
Styles may vary from picture



Y-1704-62 - 90°

- (1) Male 37°
 - (2) O-Ring Flange
- Code 62**

Y-1704-62-12-12
Y-1704-62-12-16
Y-1704-62-12-20
Y-1704-62-16-12
Y-1704-62-16-16
Y-1704-62-16-20
Y-1704-62-16-24
Y-1704-62-20-16
Y-1704-62-20-20
Y-1704-62-20-24
Y-1704-62-24-16
Y-1704-62-24-20
Y-1704-62-24-24
Y-1704-62-24-32
Y-1704-62-32-32



Y-1704-F-62 - 90°

- Forged**
- (1) Male 37°
 - (2) O-Ring Flange
- Code 62**

Y-1704-F-62-08-08
Y-1704-F-62-12-12
Y-1704-F-62-12-16
Y-1704-F-62-16-12
Y-1704-F-62-16-16
Y-1704-F-62-16-20
Y-1704-F-62-16-24
Y-1704-F-62-20-16
Y-1704-F-62-20-20
Y-1704-F-62-20-24
Y-1704-F-62-24-16
Y-1704-F-62-24-24
Y-1704-F-62-24-32
Y-1704-F-62-32-32

PARTS INDEX

Y-SF-3300-61.....	1
Y-SF-3300-62.....	1
Y-SF-61-CP	1
Y-SF-62-CP	1
Y-SF-P61	1
Y-SF-P62	1
Y-SF-PCAT.....	1
Y-SF-W36K	1
Y-SF-W38K	1
Y-SF-W43K	2
Y-SF-W104	2
Y-SF-W44K	2
Y-SF-W45	2
Y-SF-W46K	2
Y-SF-W4K	2
Y-SF-W61	2
Y-SFK-61	2
Y-SFK-62	2
Y-SFK-62-CAT	3
Y-1700-61	3
Y-1700-62	3
Y-1703-61	3
Y-1703-62	3
Y-1704-61	3
Y-1704-F-61	3
Y-1704-62	4
Y-1704-F-62	4

TUBE FITTINGS, J.I.C. - S.A.E.

Dash Number	2	3	4	5	6	8	10	12	14	16	20	24	32
Tube O.D.	$\frac{1}{8}$	$\frac{3}{16}$	$\frac{1}{4}$	$\frac{5}{16}$	$\frac{3}{8}$	$\frac{1}{2}$	$\frac{5}{8}$	$\frac{3}{4}$	$\frac{7}{8}$	1	1- $\frac{1}{4}$	1- $\frac{1}{2}$	2
Straight Thread	$\frac{5}{16}$ -24	$\frac{3}{8}$ -24	$\frac{7}{16}$ -20	$\frac{1}{2}$ -20	$\frac{9}{16}$ -18	$\frac{3}{4}$ -16	$\frac{7}{8}$ -14	1 $\frac{1}{16}$ -12	1 $\frac{3}{16}$ -12	1 $\frac{5}{16}$ -12	1 $\frac{5}{8}$ -12	1 $\frac{7}{8}$ -12	2 $\frac{1}{2}$ -12
Pipe Thread Std.	$\frac{1}{8}$ -27	$\frac{1}{8}$ -27	$\frac{1}{8}$ -27	$\frac{1}{8}$ -27	$\frac{1}{4}$ -18	$\frac{3}{8}$ -18	$\frac{1}{2}$ -14	$\frac{3}{4}$ -14	$\frac{3}{4}$ -14	1-11 $\frac{1}{2}$	1 $\frac{1}{4}$ -11 $\frac{1}{2}$	1 $\frac{1}{2}$ -11 $\frac{1}{2}$	2-11 $\frac{1}{2}$

PIPE ADAPTER UNIONS

Refer to Chart below for Sizes

Dash Number	2	4	6	8	12	16	20	24	32
Pipe Thread Std. NPSM - NPTF	$\frac{1}{8}$ -27	$\frac{1}{4}$ -18	$\frac{3}{8}$ -18	$\frac{1}{2}$ -14	$\frac{3}{4}$ -14	1-11 $\frac{1}{2}$	1 $\frac{1}{4}$ -11 $\frac{1}{2}$	1 $\frac{1}{2}$ -11 $\frac{1}{2}$	2-11 $\frac{1}{2}$



Adapter & Fitting Specialist

1-800-348-8467